

# Morecambe Offshore Windfarm: Generation Assets Environmental Statement

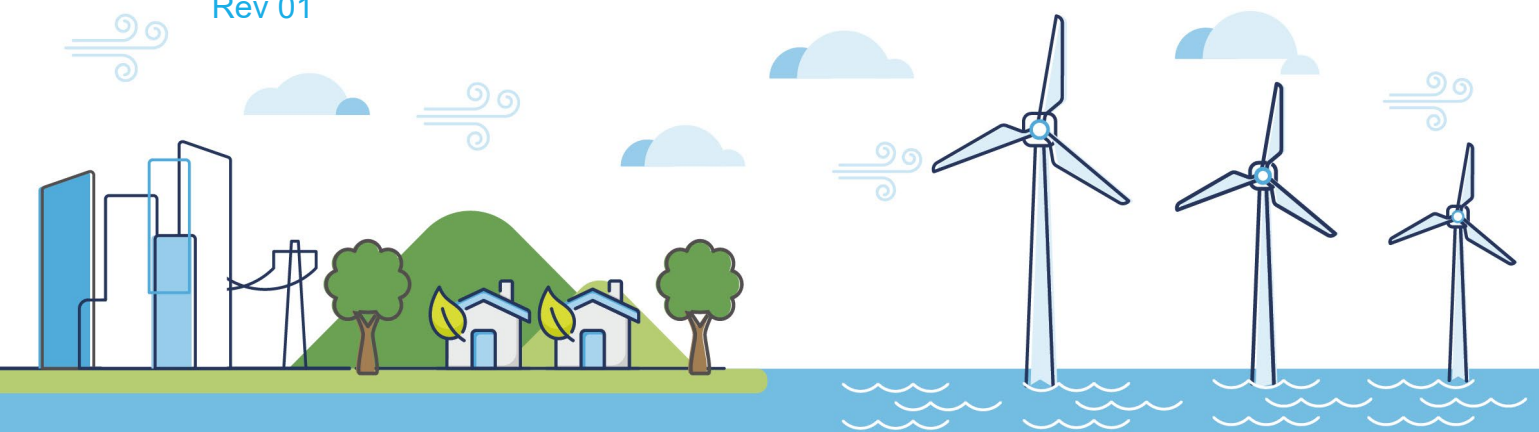
## Volume 5

### Appendix 15.3 Generation Assets Setting Assessment Cultural Heritage Viewpoint 3

PINS Document Reference: 5.3.15.3

APFP Regulation: 5(2)(a)

Rev 01

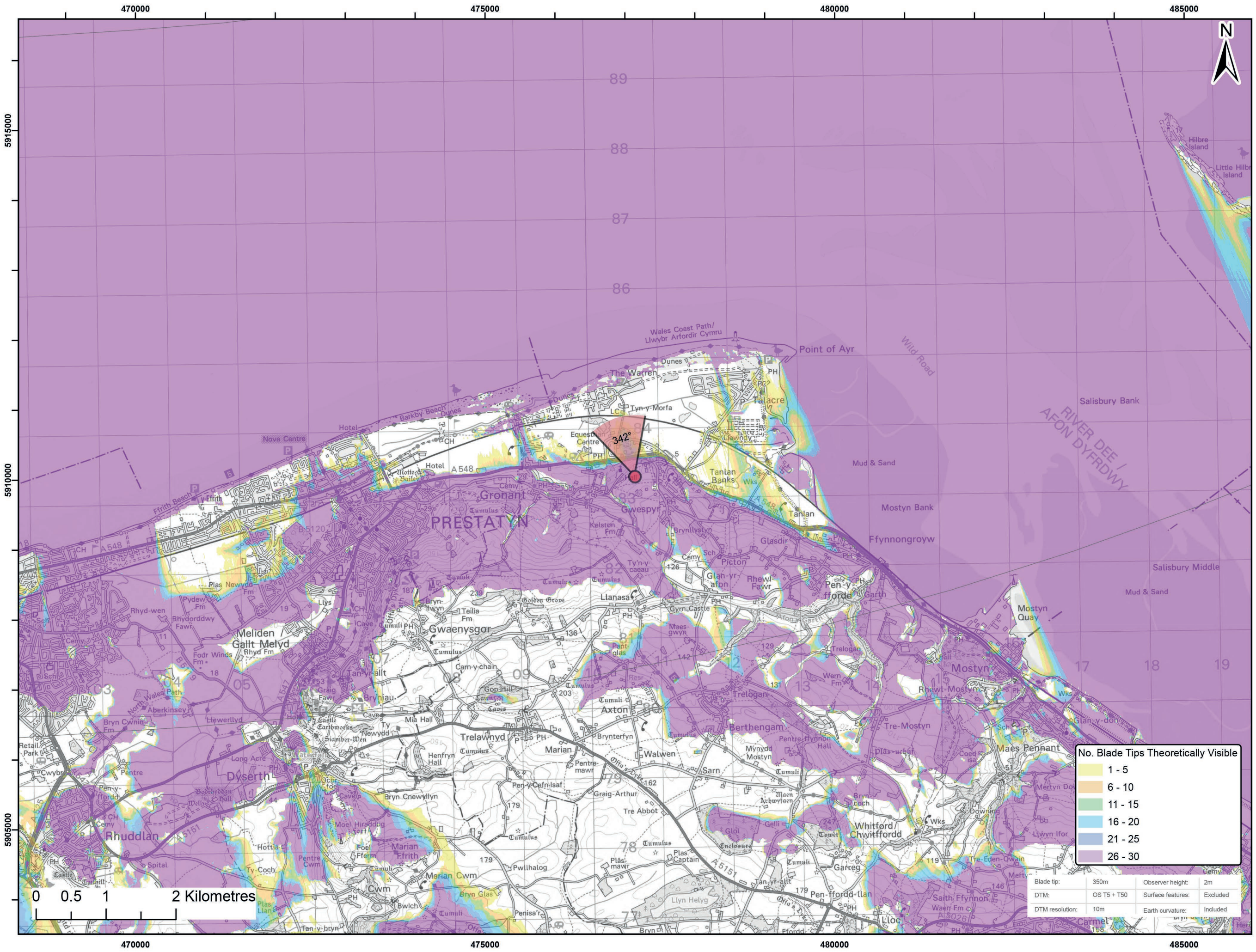
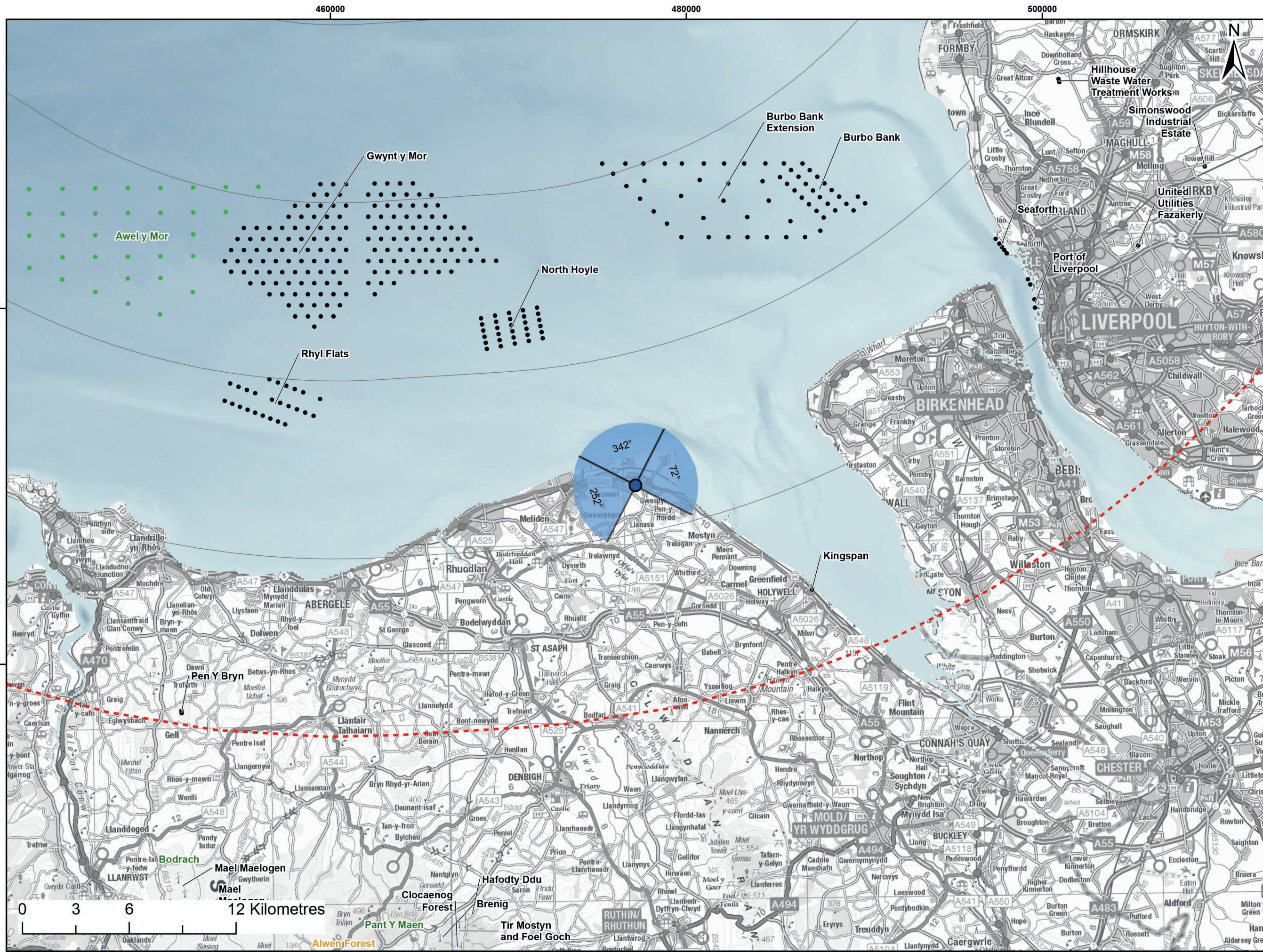


## Document History

<b>Doc No</b>	MOR001-FLO-CON-ENV-FIG-1153	<b>Rev</b>	01
<b>Alt Doc No</b>	PC1165-RHD-ES-XX-DG-Z-0026		
<b>Document Status</b>	Approved for Use	<b>Doc Date</b>	May 2024
<b>PINS Doc Ref</b>	5.3.15.3	<b>APFP Ref</b>	5(2)(a)

Rev	Date	Doc Status	Originator	Reviewer	Approver	Modifications
01	May 2024	Approved for Use	Optimised Environments Ltd	Morecambe Offshore Windfarm Ltd	Morecambe Offshore Windfarm Ltd	n/a





**Legend:**

- Morecambe Offshore Wind Farm - Assumed WTG locations (30 x BT 310m(HAT))
- 90 Degree Field of View
- 53.5 Degree Field of View
- 10km Radii
- 60km Study Area
- Morecambe Offshore Windfarm Site

**Cumulative Wind Farms Status**

- Operational
- Under Construction
- Consented
- Application
- Scoping
- Pre-Application

© Crown copyright and database rights (2023) Ordnance Survey 0100031673.

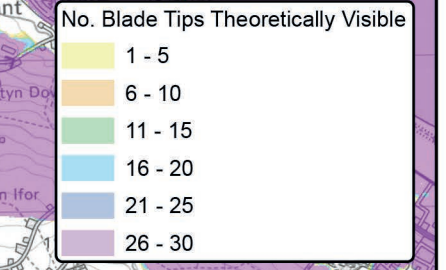
**Report:**  
Morecambe Offshore Windfarm: Generation Assets Environmental Statement

**Title:**  
Cultural Heritage Viewpoint 3: PGW(C)38(FLT) - Talacre (RPG)

**Figure:** 1.5a      **Drawing No:** 211609

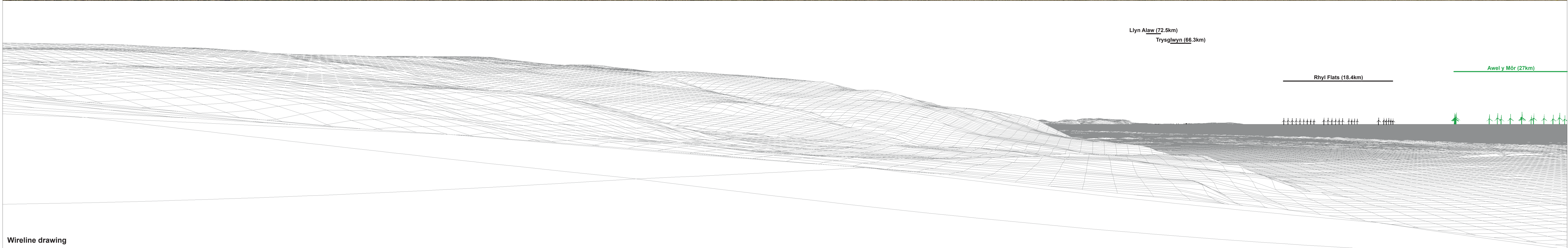
Revision:	Date:	Drawn:	Checked:	Size:	Scale:
P02	08/03/2024	RA	SM	A3	1:50,000

Co-ordinate system: WGS 1984 UTM Zone 30N



Blade tip:	350m	Observer height:	2m
DTM:	OS T5 + T50	Surface features:	Excluded
DTM resolution:	10m	Earth curvature:	Included





<b>OS reference:</b> 329457 E 479068 N	<b>Horizontal field of view:</b> 90° (cylindrical projection)	<b>Camera:</b> Canon EOS 5D Mark II
<b>Eye level:</b> 72.18 m AOD	<b>Principal distance:</b> 522 mm	<b>Lens:</b> EF50mm f/1.4 USM
<b>Direction of view:</b> 252°		<b>Camera height:</b> 1.5 m AGL
<b>Nearest turbine:</b> 47.545 km		<b>Date and time:</b> 08/08/2022, 17:02

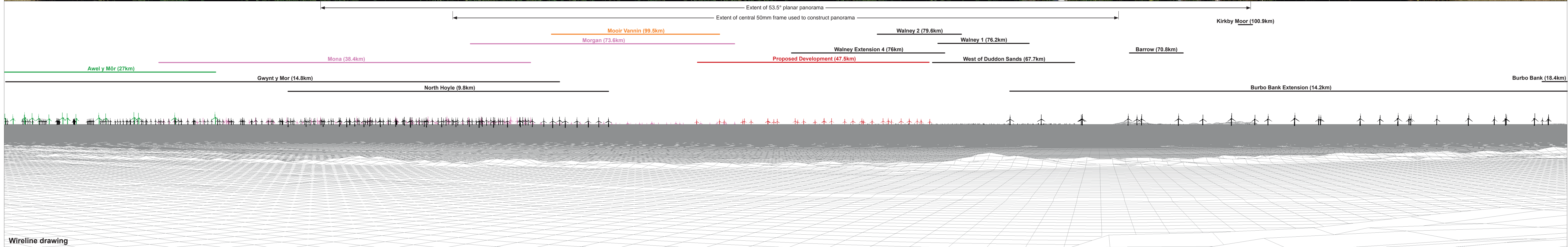
**Figure: 1.5b**  
**CH Viewpoint 3: PGW@38(FLT) – Talacre (RPG)**





Baseline photograph

This image provides landscape and visual context only

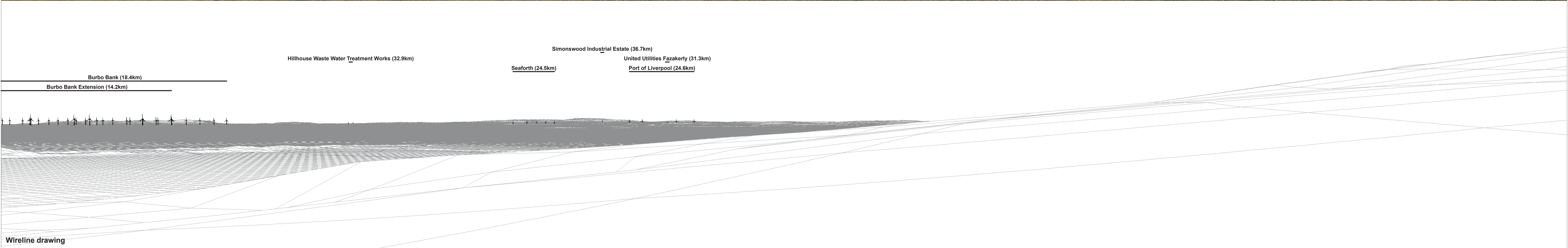


Wireline drawing

<b>OS reference:</b>	329457 E 479068 N	<b>Horizontal field of view:</b>	90° (cylindrical projection)	<b>Camera:</b>	Canon EOS 5D Mark II
<b>Eye level:</b>	72.18 m AOD	<b>Principal distance:</b>	522 mm	<b>Lens:</b>	EF50mm f/1.4 USM
<b>Direction of view:</b>	342°			<b>Camera height:</b>	1.5 m AGL
<b>Nearest turbine:</b>	47.545 km			<b>Date and time:</b>	08/08/2022, 17:02

Figure: 1.5c  
CH Viewpoint 3: PGW@38(FLT) – Talacre (RPG)

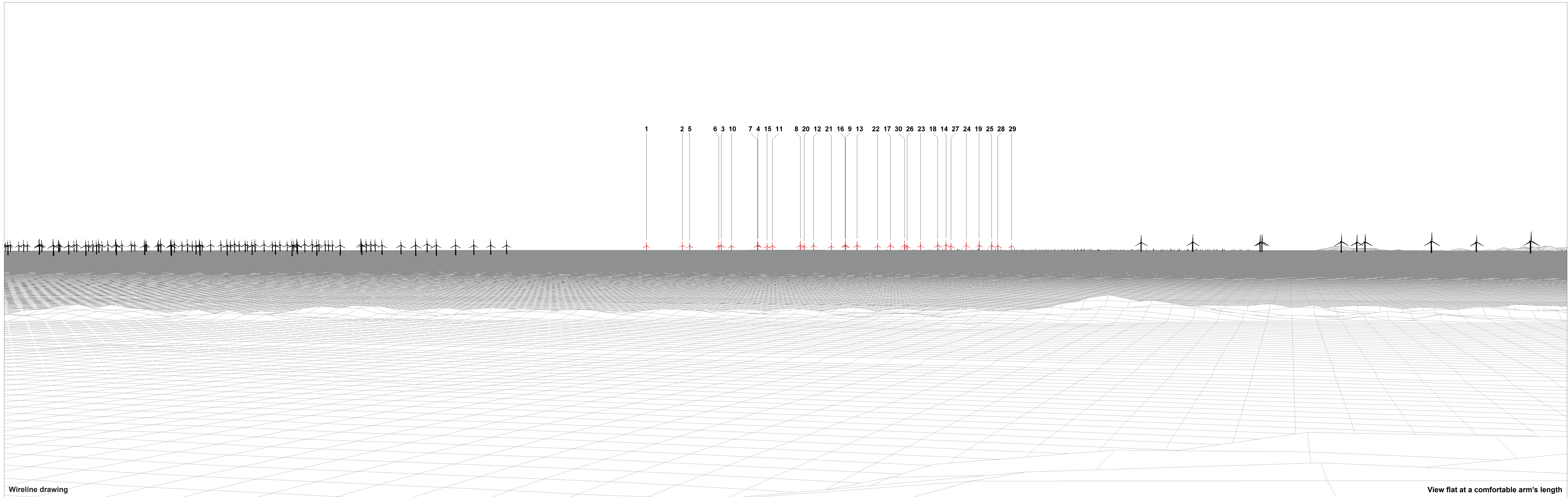




<b>OS reference:</b> 329457 E 479068 N	<b>Horizontal field of view:</b> 90° (cylindrical projection)	<b>Camera:</b> Canon EOS 5D Mark II
<b>Eye level:</b> 72.18 m AOD	<b>Principal distance:</b> 522 mm	<b>Lens:</b> EF50mm f/1.4 USM
<b>Direction of view:</b> 72°		<b>Camera height:</b> 1.5 m AGL
<b>Nearest turbine:</b> 47.545 km		<b>Date and time:</b> 08/08/2022, 17:02

**Figure: 1.5d**  
CH Viewpoint 3: PGW@38(FLT) – Talacre (RPG)





Wireline drawing

View flat at a comfortable arm's length

OS reference: 329457 E 479068 N  
 Eye level: 72.18 m AOD  
 Direction of view: 342°  
 Nearest turbine: 47.545 km

Horizontal field of view: 53.5° (planar projection)  
 Principal distance: 812.5 mm  
 Paper size: 841 x 297 mm (half A1)  
 Correct printed image size: 820 x 260 mm

Camera: Canon EOS 5D Mark II  
 Lens: EF50mm f/1.4 USM  
 Camera height: 1.5 m AGL  
 Date and time: 08/08/2022, 17:02

Figure: 1.5e  
 CH Viewpoint 3: PGW@38(FLT) – Talacre (RPG)





Baseline Photograph

View flat at a comfortable arm's length

<b>OS reference:</b> 329457 E 479068 N	<b>Horizontal field of view:</b> 53.5° (planar projection)	<b>Camera:</b> Canon EOS 5D Mark II
<b>Eye level:</b> 72.18 m AOD	<b>Principal distance:</b> 812.5 mm	<b>Lens:</b> EF50mm f/1.4 USM
<b>Direction of view:</b> 342°	<b>Paper size:</b> 841 x 297 mm (half A1)	<b>Camera height:</b> 1.5 m AGL
<b>Nearest turbine:</b> 47.545 km	<b>Correct printed image size:</b> 820 x 260 mm	<b>Date and time:</b> 08/08/2022, 17:02

Figure: 1.5f  
CH Viewpoint 3: PGW@38(FLT) – Talacre (RPG)